

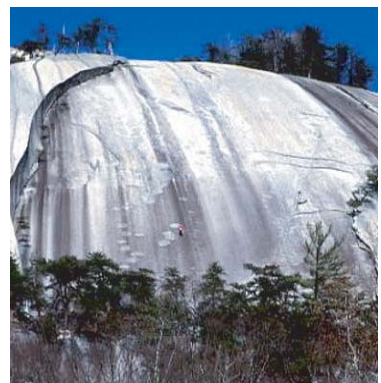
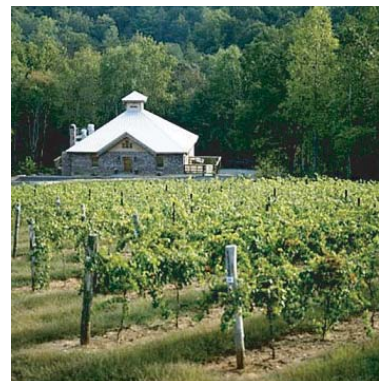
*Wilkesboro*  
*North Carolina*  
 wilkescountytourism.com



**Wilkesboro Tourism  
 Development Authority**

203 West Main Street  
 Wilkesboro, NC 28697  
 Phone: (336) 838-3951  
 Fax: (336) 838-7616

north carolina  
 visitnc.com 1-800-VISIT NC



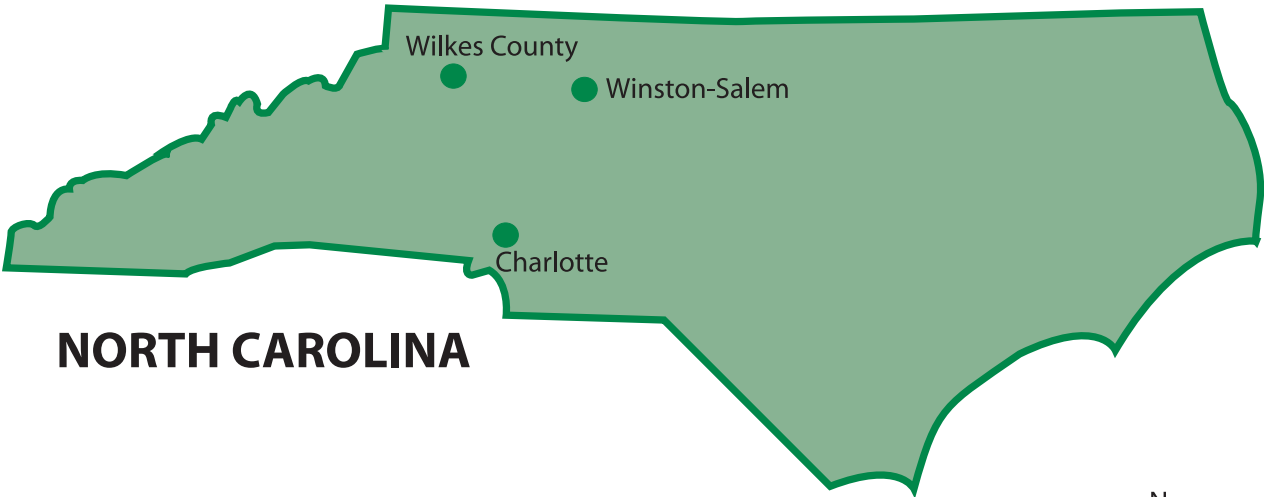


# table of contents

map of area.....	1
roots of NASCAR .....	3
art on the wall: faith & frescoes, meaning & murals .....	9
finger-pickin' to finger-lickin': good tunes & great tastes .....	17
landmarks and legends: tom dooley .....	23
from moonshine to merlot.....	25
adventures in the wild .....	31



# map of area





# roots of NASCAR

**RACIN'** (*rāāysin*) *n.* 1. a competition of speed (between the moonshine runner and the pōlice),  
*v.* 2. to move rapidly or rush (without breakin' the bottles)

## two day option: day one

### THE WILKESBOROS

Start today's tour in Wilkes County, previously known as "the Moonshine Capital of America." The **North Wilkesboro Speedway** was one of the most famous in racing. Many of the early drivers were bootleggers, including NASCAR great **Junior Johnson**. North Wilkesboro was a popular dirt track with a reputation as one of the fastest short-tracks in auto racing. When the stadium was remodeled, the new



*N. Wilkesboro Speedway*

Junior Johnson grandstand was christened with a bottle of moonshine.



*Race car driven by Junior Johnson*

Drive the back roads of Wilkes County, like the infamous "**Thunder Road**" used by the bootleggers. Stop in for lunch at **Brushy Mountain Smokehouse and Creamery**, featured on the Food Network show *BBQ with Bobby Flay* and in *Our State* magazine, and filled with NASCAR memorabilia. After lunch head to **Historic**

**Downtown Wilkesboro** and the **Wilkes Heritage Museum**, a new museum in the restored 1902 Wilkes County Courthouse. The museum includes the history of moonshine in Wilkes County and how that gave birth to NASCAR. Leave time to explore the museum gift shop and the nearby antique stores.

Finish the evening by attending ***Moonshine and Thunder***, a play by local playwright Karen Reynolds, which tells the story of the early years of running 'shine and racing in the mountains of North Carolina, and how that evolved to NASCAR. The play focuses primarily on living legend Junior Johnson, from his early years as a moonshiner to his early years in NASCAR. Performed at the stunning Fort Hamby outdoor amphitheater on the banks of W. Kerr Scott Dam & Reservoir, this will be one of the highlights of your trip (seasonal.)

*Overnight in the Wilkesboro area.*



## two day option: day two

### CHARLOTTE

Gear up and get your adrenaline going as you head to the **Richard Petty Driving Experience** at **Lowe's Motor Speedway** in Charlotte, the super speedway most drivers call home. You'll race around the track in a NASCAR-style race car with a professional driver at speeds up to 165 miles an hour.

Enjoy lunch while sitting underneath the chassis of a real race car at **Quaker Steak and Lube**, where you'll find the best wings in town. Visit the race shops and museums at **Roush Racing**, **Hendrick Motorsports**, **Chip Ganassi**, and **Haas CNC Racing**, where race cars are built and pit crews are trained.



*Lowe's Motor Speedway, Charlotte, NC Photo courtesy of Visit Charlotte*

Head out to the number one attraction in the state of North Carolina, **Concord Mills**, where you can put the pedal to the metal and test your driving skills at **NASCAR SpeedPark**, a 7-acre NASCAR-themed amusement park with six challenging racetracks as well as miniature golf and bumper boats, or practice your speed shopping at hundreds of the best known retailers.

Finish your day by following **The Dale Trail** in Kannapolis – Dale Earnhardt's hometown. Pass landmarks relating to Earnhardt's lifetime and legendary NASCAR career, then stop and tour **Dale Earnhardt Inc.**

## four day option: day one

### THE WILKESBOROS

Start today's tour in Wilkes County, previously known as "the Moonshine Capital of America." The **North Wilkesboro Speedway** was one of the most famous in racing. Many of the early drivers were bootleggers, including NASCAR great **Junior Johnson**. North Wilkesboro was a popular dirt track with a reputation as one of the fastest short-tracks in auto racing. When the stadium was remodeled, the new Junior Johnson grandstand was christened with a bottle of moonshine.



N. Wilkesboro Speedway

Drive the back roads of Wilkes County, like the infamous "**Thunder Road**" used by the bootleggers. Stop in for lunch at **Brushy Mountain Smokehouse and Creamery**,



Wilkes Heritage Museum

featured on the Food Network show *BBQ with Bobby Flay* and in *Our State* magazine, and filled with NASCAR memorabilia. After lunch head to **Historic Downtown Wilkesboro** and the **Wilkes Heritage Museum**, a new museum in the restored 1902 Wilkes County Courthouse. The museum includes the history of moonshine in Wilkes County and how that gave birth to NASCAR. Leave time to explore the museum gift shop and the nearby antique stores.

Finish the evening by attending ***Moonshine and Thunder***, a play by local playwright Karen Reynolds, which tells the story of the early years of running 'shine and racing in the mountains of North Carolina, and how that evolved to NASCAR. The play focuses primarily on living legend Junior Johnson, from his early years as a moonshiner to his early years in NASCAR. Performed at the stunning Fort Hamby outdoor amphitheater on the banks of W. Kerr Scott Dam & Reservoir, this will be one of the highlights of your trip (seasonal.)

*Overnight in the Wilkesboro area.*

## four day option: day two

### CHARLOTTE

Gear up and get your adrenaline going as you head to the **Richard Petty Driving Experience at Lowe's Motor Speedway** in Charlotte, the super speedway most drivers call home. You'll race around the track in a NASCAR-style race car with a professional driver at speeds up to 165 miles an hour.



*Richard Petty Driving Experience  
Lowe's Motor Speedway*

Visit the race shops and museums at **Roush Racing, Hendrick Motorsports, Chip Ganassi, and Haas CNC Racing**, where race cars are built and pit crews are trained.



*Richard Petty Driving Experience  
Lowe's Motor Speedway*

Head out to the number one attraction in the state of North Carolina, **Concord Mills**, where you can put the pedal to the metal and test your driving skills at **NASCAR SpeedPark**, a 7-acre NASCAR-themed amusement park with six challenging racetracks as well as miniature golf and bumper boats, or practice your speed shopping at hundreds of the best known retailers.

Enjoy a night out on the town in Charlotte.

*Overnight in the Charlotte area.*

## four day option: day three

### **CHARLOTTE, WINSTON-SALEM**

Start your morning with a visit to a gallery of motorsports art by world-renowned artist **Sam Bass** (call ahead to meet the artist himself.)

Then head out on **The Dale Trail** in Kannapolis – Dale Earnhardt’s hometown – past landmarks relating to his lifetime and legendary NASCAR career. Stop for a tour of **Dale Earnhardt Inc.**

Enjoy lunch while sitting underneath the chassis of a real car at **Quaker Steak & Lube**, where you’ll find the greatest wings in town.

Head to Winston-Salem for a visit to the **Winston Cup Museum**, which is designed to preserve NASCAR history and Winston-Salem’s ties to the largest spectator sport in the country. The museum houses authentic race cars from different eras of the 33-year NASCAR Winston Cup Series, as well as trophies, driver’s uniforms, and other memorabilia.

Take in a race at **Bowman Gray Racing**, the longest running NASCAR Weekly Racing facility in America (seasonal.)

*Overnight in the Winston-Salem area.*

## four day option: day four

### **WINSTON-SALEM**

This morning, visit the **Richard Childress Racing Museum**, a 47,000 square foot facility that encompasses the original No. 3 race shop and houses 46 race cars. Of those 46 race cars, 22 are black No. 3 GM Goodwrench Chevrolet Monte Carlos or Lumina driven by Dale Earnhardt. Danny "Chocolate" Myers, famed longtime gas man for the No. 3 team, is the curator of the museum.

Your final stop is **Childress Vineyards**, owned by NASCAR team owner Richard Childress. Indulge in lunch at the sumptuous vineyard bistro, followed by a wine tasting and a tour.

## contacts

### **PRIMARY CONTACT:**

Wilkesboro Tourism Development Authority  
203 West Main Street  
Wilkesboro, NC 28697  
336.838.3951 x 242  
[info@wilkescountytourism.com](mailto:info@wilkescountytourism.com)  
[www.wilkescountytourism.com](http://www.wilkescountytourism.com)

### **SECONDARY CONTACTS:**

Winston Salem Convention & Visitors Bureau  
200 Brookstown Ave.  
Winston-Salem, NC 27101  
866.728.4200  
[info@wscvb.com](mailto:info@wscvb.com)  
[www.visitwinstonsalem.com](http://www.visitwinstonsalem.com)

Visit Charlotte  
500 S College St  
Suite 300  
Charlotte NC 28202  
704.331.2748  
[www.visitcharlotte.com](http://www.visitcharlotte.com)

# art on the wall: faith & frescoes, meaning & murals

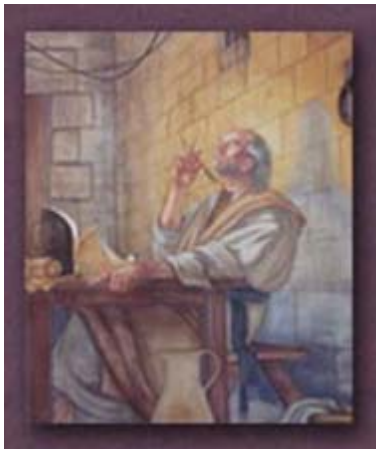
***Benjamin F. Long IV is a classical realist painter who studied under Pietro Annigoni in Italy. After completing several frescoes in Italy, including the only painting by a non-Italian at the abbey of Montecassino, Long brought his fresco talent to America. Since 1978, Long has completed 13 frescoes in North Carolina, most of a religious nature. A fresco is a labor-intensive process using fresh, damp lime plaster and pigments dissolved in distilled water; the fresco becomes the wall itself.***

***William Vance Nichols was born in the North Carolina foothills. His perpetual love for art turned into a career that has spanned more than 30 years, including creation of many large murals in area churches. A mural is a large image applied with acrylic or oil paints directly to a wall or ceiling; the wall or ceiling becomes the canvas. His philosophy of art is to magnify the subject by showing the importance and beauty of everyday objects and scenes.***

## two day option: day one

### THE WILKESBOROS, GLENDALE SPRINGS, WEST JEFFERSON

Begin your day in **Wilkesboro** by visiting the Benjamin F. Long IV frescoes ***St. Paul's Conversion*** and ***St. Paul Writing His Epistles*** at historic St. Paul's Episcopal Church. Afterwards, take a meditative walk through St. Paul's **Labyrinth**, a replica of the labyrinth at the famous Chartres Cathedral in France.



*Benjamin F. Long IV  
St. Paul Writing His Epistles*

Continue on to view some of the works of William Vance Nichols: the floor-to-ceiling mural titled ***Victory in Jesus*** at Mt. Zion Baptist Church, and ***Beside the Still Waters*** at First Baptist Church, a 5 ft by 9 ft painting interpreting the 23rd Psalm.

The rest of the morning is yours to explore **Historic Downtown North Wilkesboro** and enjoy lunch at a local eatery. After lunch, rejoin the group and head to **Glendale Springs** to see Benjamin F. Long IV's ***The Last Supper*** at Holy Trinity Episcopal Church. Drive to **West Jefferson** to see Long's ***Mary Great with Child***, ***John the Baptist***, and ***The Mystery of Faith*** frescoes at St. Mary's Episcopal Church.

Time to explore West Jefferson before heading back to Wilkesboro for dinner.

*Overnight in Wilkesboro.*

## two day option: day two

### THE WILKESBOROS

Start the day in beautiful **Moravian Falls**, viewing the William Vance Nichols mural ***Unto the Hills***, a 6 ft by 30 ft mural at Mount Carmel Baptist Church, which depicts five Old Testament and five New Testament scenes on either side of a tranquil lake and mountain scene.

Continue on to view Nichols' ***Children Come unto Me***, a beautiful mural of Jesus with children at the New Hope Baptist Church.



*William Vance Nichols: Children Come unto Me*

Head to the Forever Grace Christian Store, where you can view Nichols' ***Deep Calls unto Deep***, a wall size mural designed to bring peace and inspiration.

Have lunch at an area restaurant – try down home cooking at Hadley's or Banjo's Mountain Eatery, or savor NC barbecue and handcrafted ice cream at Brushy Mountain Smokehouse and Creamery, featured on the Food Network show *BBQ with Bobby Flay* and in *Our State* magazine.

Continue on to Middle Cross Baptist Church to view ***Gathering Darkness***, a 4 ft by 8 ft Nichols painting of Christ on the cross.

Head into **Historic Downtown Wilkesboro** to tour the **Wilkes Heritage Museum**, housed in the restored 1902 Wilkes County Courthouse. The museum includes a 5 ft by 9 ft Nichols painting of a Cherokee Indian village which was located in Wilkes County, as well as exhibits on musical heritage, NASCAR/Junior Johnson, military artifacts, and more.

Leave time to explore the museum gift shop, the historic downtown, and the nearby antique stores before heading on to **Meadowlark Emporium**, a huge lodge-style shopping emporium with over 100 shops.

## four day option: day one

### THE WILKESBOROS, GLENDALE SPRINGS, WEST JEFFERSON

Begin your day in **Wilkesboro** by visiting the Benjamin F. Long IV frescoes **St. Paul's Conversion** and **St. Paul Writing His Epistles** at historic St. Paul's Episcopal Church. Afterwards, take a meditative walk through St. Paul's **Labyrinth**, a replica of the labyrinth at the famous Chartres Cathedral in France.



*Benjamin F. Long IV: St. Paul's Conversion*

Continue on to view some of the works of William Vance Nichols: the floor-to-ceiling mural titled **Victory in Jesus** at Mt. Zion Baptist Church, and **Beside the Still Waters** at First Baptist Church, a 5 ft by 9 ft painting interpreting the 23rd Psalm.

The rest of the morning is yours to explore **Historic Downtown North Wilkesboro** and enjoy lunch at a local eatery. After lunch, rejoin the group and head to **Glendale Springs**

to see Benjamin F. Long IV's **The Last Supper** at Holy Trinity Episcopal Church. Drive to **West Jefferson** to see Long's **Mary Great with Child, John the Baptist**, and **The Mystery of Faith** frescoes at St. Mary's Episcopal Church.

Time to explore West Jefferson before heading back to Wilkesboro for a group dinner at a local restaurant.

*Overnight in Wilkesboro.*



*Historic Downtown North Wilkesboro*



## four day option: day two

### THE WILKESBOROS

Start the day in beautiful **Moravian Falls**, viewing the William Vance Nichols mural ***Unto the Hills***, a 6 ft by 30 ft mural at Mount Carmel Baptist Church, which depicts five Old Testament and five New Testament scenes on either side of a tranquil lake and mountain scene.

Continue on to view Nichols' ***Children Come unto Me***, a beautiful mural of Jesus with children at the New Hope Baptist Church.

Head to the Forever Grace Christian Store, to view Nichols' ***Deep Calls unto Deep***, a wall size mural designed to bring peace and inspiration.

Have lunch at an area restaurant – try down home cooking at Hadley's or savor NC barbecue and handcrafted ice cream at Brushy Mountain Smokehouse and Creamery, featured on the Food Network show *BBQ with Bobby Flay* and in *Our State* magazine.



*William Vance Nichols: Deep Calls Unto Deep*

Continue on to Middle Cross Baptist Church to view ***Gathering Darkness***, a 4 ft by 8 ft Nichols painting of Christ on the cross.

Head into **Historic Downtown Wilkesboro** to tour the **Wilkes Heritage Museum**, housed in the restored 1902 Wilkes County Courthouse. The museum includes a 5 ft by 9 ft Nichols painting of a Cherokee Indian village which was located in Wilkes County, as well as exhibits on musical heritage, NASCAR/Junior Johnson, military artifacts, and more.

Leave time to explore the museum gift shop, the historic downtown, and the nearby antique stores before heading on to **Meadowlark Emporium**, a huge lodge-style shopping emporium with over 100 shops.

Enjoy a country-style group dinner at **Banjo's Mountain Eatery**.

*Overnight in Wilkesboro.*

## four day option: day three

### **CROSSNORE, MONTREAT, & MORGANTON**

Spend the day viewing the frescoes of Benjamin F. Long IV. First, head to Crossnore School, off of the scenic **Blue Ridge Parkway**, to view Long's fresco ***Suffer the Little Children*** in the stunning **E.H. Sloop Chapel**. Grab a gourmet coffee or snack at **Miracle Grounds Coffee Shop and Book Store**, then explore the **Blair Fraley Sales Store**, a 10,000 square foot thrift shop known to bargain hunters far and wide, and **Crossnore Weavers and Gallery: A Working Museum**, where the art of Appalachian hand-weaving is kept alive for the benefit of The Crossnore School. **Crossnore Fine Arts Gallery**, just a short trip on US 221 to Linville, showcases more of the fine artwork of Ben Long, his apprentices and other area artists.



*E.H. Sloop Chapel*

Stop for lunch at **Loaves and Fishes** in Crossnore before heading out of town.

Continue down the historic Blue Ridge Parkway to the mountain Gothic style Chapel of the Prodigal at Montreat College to view Long's ***Return of the Prodigal***. Admire the chapel's roof trusses, which are comprised of heavy timbers over 200 years old. The chapel is completed by an Allen Renaissance Organ and a splendid carillon which produces the sounds of sixty-one bells.

Head east to **Morganton** to view Long's ***Sacred Dance & The Muses*** at the City of Morganton Municipal Auditorium.



*Chapel of the Prodigal*

The evening is yours in Morganton to explore the city's historic downtown and unique shops and restaurants.

*Overnight in Morganton.*

*art on the wall: faith & frescoes, meanings & murals*

## four day option: day four

### **STATESVILLE, CHARLOTTE**

Drive through historic **Statesville** on your way to view Long's ***Images at the Crossroads*** at the Statesville Civic Center.

Continue on to **Charlotte** to view Long's fresco ***Making/Building, Chaos/Creativity, Planning/Knowledge*** at the Bank of America Corporate Center.

Hungry yet? You can grab a bite to eat at the newly opened **Billy Graham Library**. Resting on the property is his restored boyhood home as well as the beautiful barn the Library calls home. After your lunch at the **Dairy Bar**, take a stroll through the Library. You will be taken back to Dr. Graham's humble beginnings and chronicle his transformation from a farm boy to an international leader. Through inspiring multimedia exhibits, you'll discover the man, the ministry, and the message of Billy Graham and catch a vision for the mission still being carried on today. A one of a kind experience you won't want to miss!

Finish the day by viewing three more Long frescoes: ***Untitled*** at the Charlotte-Mecklenburg Law Enforcement Center, ***Continuum***, at Transamerica Square, and ***The Good Samaritan*** at First Presbyterian Church.

***[Asheville Option: Add Asheville to this tour by extending tour to five days. After visiting Montreat College on day three, add shopping and exploring in Black Mountain, then an overnight in Asheville. The next day, continue on to Morganton and finish tour as described.]***

## contacts

### **PRIMARY CONTACT:**

Wilkesboro Tourism Development Authority  
203 West Main Street  
Wilkesboro, NC 28697  
336.838.3951 x 242  
[info@wilkescountytourism.com](mailto:info@wilkescountytourism.com)  
[www.wilkescountytourism.com](http://www.wilkescountytourism.com)

### **SECONDARY CONTACTS:**

Burke County Travel & Tourism Commission  
102 East Union Street  
Courthouse Square  
Morganton, NC 28655  
828.433.6793  
[www.burkecountytourism.org](http://www.burkecountytourism.org)  
[niewold@burkecountytourism.org](mailto:niewold@burkecountytourism.org)

Montreat College  
310 Gaither Circle  
Montreat, NC 28757  
828.669.8012 x 821  
[tprice@montreat.edu](mailto:tprice@montreat.edu)

NC High Country Host  
1700 Blowing Rock Road  
Boone, NC 28607  
828.264.1299  
[www.highcountryhost.com](http://www.highcountryhost.com)  
[info@highcountryhost.com](mailto:info@highcountryhost.com)

Statesville TDA  
111 Depot Lane  
Statesville, North Carolina 28677  
704.878.3480  
[www.visitstatesville.org](http://www.visitstatesville.org)  
[info@visitstatesville.org](mailto:info@visitstatesville.org)

*art on the wall: faith & frescoes, meanings & murals*

## contacts, con't.

Visit Charlotte  
500 S College St  
Suite 300  
Charlotte NC 28202  
704.331.2748  
[www.visitcharlotte.com](http://www.visitcharlotte.com)

# finger-pickin' to finger-lickin': good tunes & great tastes

*From Mountain Music to renowned North Carolina barbecue, fine cuisine to down home cookin', this tour has a little bit of it all.*

## two day option: day one

### THE WILKESBOROS

Begin in **Historic Downtown Wilkesboro** with a visit to the **Old Wilkes Jail** where Tom Dula (of "Hang Down Your Head, Tom Dooley" fame) was incarcerated. Across the street you'll find the **Wilkes Heritage Museum**. This new museum in the restored 1902 Wilkes County Courthouse includes exhibits on musical heritage, the history of moonshine and the evolution of NASCAR, the poultry industry in Wilkes County (including homegrown Holly Farms – now Tyson), military artifacts, and more. While at the museum, visit the **Blue Ridge Music Hall of Fame**, housed in the historic courtroom (scheduled to open Summer 2008.) Leave time to explore the museum gift shop and the downtown antique stores.

Enjoy lunch at **Brushy Mountain Smokehouse and Creamery**, featured on the Food Network show *BBQ with Bobby Flay* and in *Our State* magazine. Award winning barbecue, handcrafted ice cream, and a restaurant filled with moonshine and NASCAR memorabilia, including an old moonshine still.

Head to **Raffaldini Vineyards** for a tasting and a stroll through the rose gardens. Sip a glass of wine on the patio as you take in the breathtaking views of the Blue Ridge Mountains.



*Sunset at Raffaldini Vineyards - photo courtesy of Raffaldini Vineyards*

Finish the day at **Meadowlark Emporium**, a huge lodge-style shopping emporium with over 100 shops. Enjoy a group dinner at **Banjo's Mountain Eatery**, followed by musical entertainment at Meadowlark's music stage or amphitheatre (Friday & Saturday nights only.)

*Overnight in the Wilkesboro area.*

*finger-pickin' to finger-lickin': good tunes & great tastes*

## two day option: day two

### THE WILKESBOROS, WEST JEFFERSON & TODD

Experience a local phenomenon of world-class Americana/Bluegrass music at the **Hometown Opry** in North Wilkesboro. Every Friday morning from 7 a.m. to 9 a.m., people gather at Minton Music and Pawn to see a live musical performance that is also broadcast on WKBC 800AM. You never know who might stop by to play – from local performers to well-known recording artists. Memorabilia and musical instruments fill the walls.



*Hometown Opry in North Wilkesboro*

Have a traditional country breakfast at a local restaurant, then head into **Todd**, one of the only communities almost entirely on the National Register of Historic Places. Doc Watson plays here every summer. During the day it is the perfect place for lunch, and **Todd Mercantile** is the best bet for dessert. Head into **West Jefferson** for some shopping and sightseeing.

## four day option: day one

### THE WILKESBOROS

Begin in **Historic Downtown Wilkesboro** with a visit to the **Old Wilkes Jail** where Tom Dula (of "Hang Down Your Head, Tom Dooley" fame) was incarcerated. Across the street you'll find the **Wilkes Heritage Museum**.

This new museum in the restored 1902 Wilkes County Courthouse includes exhibits on musical heritage, the history of moonshine and the evolution of NASCAR, the poultry industry in Wilkes County (including homegrown Holly Farms – now Tyson), military artifacts, and more. While at the museum, visit the **Blue Ridge Music Hall of Fame**, housed in the historic courtroom (scheduled to



*Wilkes Heritage Museum*

open Summer 2008.) Leave time to explore the museum gift shop and the downtown antique stores.



*Preparing NC barbecue – photo courtesy of Brushy Mtn Smokehouse & Creamery*

Enjoy lunch at **Brushy Mountain Smokehouse and Creamery**, featured on the Food Network show *BBQ with Bobby Flay* and in *Our State* magazine. Award winning barbecue, handcrafted ice cream, and a restaurant filled with moonshine and NASCAR memorabilia, including an old moonshine still.

Head to **Raffaldini Vineyards** for a tasting and a stroll through the rose gardens. Sip a glass of wine on the patio as you take in the breathtaking views of the Blue Ridge Mountains.

Finish the day at **Meadowlark Emporium**, a huge lodge-style shopping emporium with over 100 shops. Enjoy a group dinner at **Banjo's Mountain Eatery**, followed by musical entertainment at Meadowlark's music stage or amphitheatre (Friday & Saturday nights only.)

*Overnight in the Wilkesboro area.*



*finger-pickin' to finger-lickin': good tunes & great tastes*

## four day option: day two

### THE WILKESBOROS, WEST JEFFERSON & TODD

Experience a local phenomenon of world-class Americana/Bluegrass music at the **Hometown Opry** in Wilkesboro. Every Friday morning from 7 a.m. to 9 a.m., people gather at Minton Music and Pawn to see a live musical performance that is also broadcast on WKBC 800AM. You never know who might stop by to play – from local performers to well-known recording artists. Memorabilia and musical instruments fill the walls.



*Hometown Opry in North Wilkesboro*



*Todd General Store  
- photo courtesy of Jefferson Post*

Have a traditional country breakfast at a local restaurant, then head into **Todd**, one of the only communities almost entirely on the National Register of Historic Places. Doc Watson plays here every summer. During the day it is the perfect place for lunch, and **Todd Mercantile** is the best bet for dessert. Head into **West Jefferson** for some shopping and sightseeing.

Enjoy a group dinner, then for your evening entertainment, catch the jam session at the **Todd General Store** (Fridays) or the **Alleghany Jubilee** (Friday & Saturday evenings.)

*Overnight in the West Jefferson area.*

## four day option: day three

### CHARLOTTE

Head to **Charlotte**, stopping for lunch at **Carolina BBQ** on the way. Be sure to plan on spending the night in one of the many center city properties the beautiful "Queen City" has to offer. After checking in to your accommodations for the night, the afternoon and evening is yours for a night out on the town. Charlotte is fast becoming known for its vast array of culinary delights. As home to **Johnson & Wales University**, many of the graduating chefs have decided to call Charlotte home and have opened their own establishments.

Your choices range from **Mimosa Grill**, global cuisine with a southern twist using the best locally and regionally grown ingredients in a "farm-to-plate" signature style, to **Blue Restaurant**, offering flavors from around the Mediterranean region, just to name a couple.

After dinner you may want to head out to Charlotte's oldest live music establishment, the **Double Door Inn**. It has been bringing in local, regional, and national acts since its doors opened on December 22, 1973. The Double Door Inn has gained national recognition for bringing in the best in blues artists. A few of the blues acts which laid the foundation for this local mainstay included the Nighthawks, T-Birds, Stevie Ray Vaughn and Delbert McClinton.

*Overnight in Charlotte.*

## four day option: day four

### CHARLOTTE

Visit **Johnson & Wales University** to tour their culinary arts facilities or check out cooking classes for your group.

Before heading home be sure to stop in and have lunch in the heart and soul of the City at **Mert's Heart and Soul**. The heart is represented in its scarlet walls, check-board floor and countless black and white photographs covering the walls. The soul is found in the eats, down-home good comfort food like your mama may have made. The pork chops are widely considered the finest in the city, served with two sides and a mini-loaf of sweet cornbread. You'll ask for seconds of your veggies; mashed potatoes, red beans & rice, macaroni & cheese . . . mmm!

*finger-pickin' to finger-lickin': good tunes & great tastes*

## contacts

### **PRIMARY CONTACT:**

Wilkesboro Tourism Development Authority  
203 West Main Street  
Wilkesboro, NC 28697  
336.838.3951 x 242  
[info@wilkescountytourism.com](mailto:info@wilkescountytourism.com)  
[www.wilkescountytourism.com](http://www.wilkescountytourism.com)

### **SECONDARY CONTACTS:**

NC High Country Host  
1700 Blowing Rock Road  
Boone, NC 28607  
828.264.1299  
[www.highcountryhost.com](http://www.highcountryhost.com)  
[info@highcountryhost.com](mailto:info@highcountryhost.com)

Visit Charlotte  
500 S College St  
Suite 300  
Charlotte NC 28202  
704.331.2748  
[www.visitcharlotte.com](http://www.visitcharlotte.com)

# landmarks & legends: tom dooley

***People nationwide have been intrigued with the Tom Dula (a.k.a. "Tom Dooley") story for over a century. The murder of Laura Foster was one of the nation's first highly publicized crimes of passion. Tom Dula was hanged for the crime, but many questions were left unanswered. The Kingston Trio catapulted Tom Dula to fame again in the 1960's with the song "Hang Down Your Head Tom Dooley." Visitors still travel from far and wide to visit the graves and tour the countryside where the story took place.***

***- Karen Reynolds, playwright of "Tom Dooley: A Wilkes County Legend"***

## two day tour: day one

### HISTORIC HAPPY VALLEY & THE WILKESBOROS

Begin the day with a drive through rolling foothills on a tour of Tom Dula sites throughout the area. On the tour, you'll drive along NC Scenic Highway 268 through **Historic Happy Valley**, passing the grave of Laura Foster - it is her murder that inspired the legend of Tom Dula.

Take a break for lunch at **Brushy Mountain Smokehouse and Creamery**, featured on the Food Network show *BBQ with Bobby Flay* and in *Our State* magazine. Known for its award winning barbecue and handcrafted ice cream, the restaurant is filled with moonshine and NASCAR memorabilia, including an old moonshine still.

Head over to **Whippoorwill Academy and Village**, a collection of 19th century log cabin buildings including the Tom Dula Art Museum. In the loft of the Academy is the Tom Dula Museum, which includes paintings, drawings, and other memorabilia.

Finish the evening attending ***Tom Dooley: a Wilkes County Legend***, a play by local playwright Karen Reynolds. Performed at the stunning Fort Hamby outdoor amphitheater on the banks of W. Kerr Scott Dam & Reservoir, this will be one of the highlights of your trip (seasonal.)

*Overnight in Wilkesboro area.*



*Whippoorwill Academy and Village*

## two day tour: day two

### **WILKESBORO**

Begin with a visit to **Historic Downtown Wilkesboro** and the **Old Wilkes Jail** where Tom Dula was incarcerated. Across the street you'll find the **Wilkes Heritage Museum**. This new museum in the restored 1902 Wilkes County Courthouse includes exhibits on the story of Tom Dula, musical heritage, the history of moonshine and the evolution of NASCAR, and more. Leave time to explore the museum gift shop and the downtown restaurants and antique stores before heading on to **Meadowlark Emporium**, a huge lodge-style shopping emporium with over 100 shops.

## contacts

### **PRIMARY CONTACT:**

Wilkesboro Tourism Development Authority  
203 West Main Street  
Wilkesboro, NC 28697  
336.838.3951 x 242  
[info@wilkescountytourism.com](mailto:info@wilkescountytourism.com)  
[www.wilkescountytourism.com](http://www.wilkescountytourism.com)

### **SECONDARY CONTACTS:**

Caldwell County Chamber of Commerce  
1909 Hickory Blvd SE  
Lenoir, NC 28645  
828.726.0616  
[brandon@caldwellcochamber.org](mailto:brandon@caldwellcochamber.org)

# from moonshine to merlot

***A region once famous as the “Moonshine Capital of America” has become one of the hottest emerging wine regions in the country. This tour takes you from the history of moonshine to some of the best local vineyards in the state.***

## two day option: day one

### THE WILKESBOROS

Begin the morning in **Historic Downtown Wilkesboro** at the new **Wilkes Heritage Museum**, housed in the restored 1902 Wilkes County Courthouse. The museum includes the history of moonshine in Wilkes County and how that gave birth to NASCAR (including world famous race car driver and “local boy” Junior Johnson.)



*Wilkes Heritage Museum*



*Original moonshine still*

Explore the nearby antique stores, then enjoy lunch at **Brushy Mountain Smokehouse and Creamery**, which is filled with NASCAR and moonshine memorabilia. Brushy Mountain Smokehouse has been featured on the Food Network show *BBQ with Bobby Flay* and in *Our State* magazine, and is famous not only for their barbecue, but also their homemade ice cream.

Continue the day with a little shopping at **Meadowlark Emporium**, a huge lodge-style shopping emporium with over 100 shops, including Junior Johnson products. In the afternoon, finish the day with a driving tour of local NASCAR sites, including the **North Wilkesboro Speedway**.

Finish the evening attending ***Moonshine and Thunder***, a play by local playwright Karen Reynolds, which tells the story of the early years of running 'shine and racing in the mountains of North Carolina, and its evolution to NASCAR. The play focuses primarily on living legend Junior Johnson, from his early years as a moonshiner to his early years in NASCAR. Performed at the stunning Fort Hamby outdoor amphitheater on the banks of W. Kerr Scott Dam & Reservoir, this will be one of the highlights of your trip (seasonal.)

*Overnight in the Wilkesboro area.*

*from moonshine to merlot*

## two day option: day two

### **YADKIN VALLEY VINEYARDS & ELKIN**

Drive by the home of one of the world's most famous former moonshine runners, Junior Johnson, on the way to **Raffaldini Vineyards**, with its stunning mountain views, Italian style wines, and extensive gardens. Some of the varietals are so unique that Raffaldini is the first vineyard in the United States to plant them.



*Sunset at Raffaldini Vineyards - photo courtesy of Raffaldini Vineyards*

Continue on to **Elkin Creek Vineyards**, for a tasting and lunch at the winery the *New York Times* described as follows: "...the one we're still talking about is Elkin Creek, a tiny winery nestled in the woods across from a well-preserved 19th-century mill. The young chef, Jesse Williams, cooks everything from local vegetables to pork shoulders in a wood-burning brick oven. We left happy and full, understanding what the French must mean when they talk about terroir — the way foods are stamped with a keen sense of place."

Continue on to **Shelton Vineyards** for a tour. Then, you'll head to **Historic Downtown Elkin** to spend the rest of the afternoon enjoying the craft shops and a visit to the **Yadkin Valley Craft Guild Shop**.

## four day option: day one

### THE WILKESBOROS

Begin the morning in **Historic Downtown Wilkesboro** at the new **Wilkes Heritage Museum**, housed in the restored 1902 Wilkes County Courthouse. The museum includes the history of moonshine in Wilkes County and how that gave birth to NASCAR (including world famous race car driver and “local boy” Junior Johnson.)



*Original moonshine barrels and still*

Explore the nearby antique stores, then enjoy lunch at **Brushy Mountain Smokehouse and Creamery**, which is filled with NASCAR and moonshine memorabilia. Brushy Mountain Smokehouse has been featured on the Food Network show *BBQ with Bobby Flay* and in *Our State* magazine, and is famous not only for their barbecue, but also their homemade ice cream.

Continue the day with a little shopping at **Meadowlark Emporium**, a huge lodge-style shopping emporium with over 100 shops, including Junior Johnson products. In the afternoon, finish the day with a driving tour of local NASCAR sites, including the **North Wilkesboro Speedway**.

Finish the evening attending ***Moonshine and Thunder***, a play by local playwright Karen Reynolds, which tells the story of the early years of running 'shine and racing in the mountains of North Carolina, and its evolution to NASCAR. The play focuses primarily on living legend Junior Johnson, from his early years as a moonshiner to his early years in NASCAR. Performed at the stunning Fort Hamby outdoor amphitheater on the banks of W. Kerr Scott Dam & Reservoir, this will be one of the highlights of your trip (seasonal.)

*Overnight in the Wilkesboro area.*



*from moonshine to merlot*

## four day option: day two

### **YADKIN VALLEY VINEYARDS & ELKIN**

Drive by the home of one of the world's most famous former moonshine runners, Junior Johnson, on the way to **Raffaldini Vineyards**, with its stunning mountain views, Italian style wines, and extensive gardens. Some of the varietals are so unique that the Raffaldini Family is the first vineyard in the United States to plant them.

Continue on to **Elkin Creek Vineyards**, for a tasting and lunch at the winery the *New York Times* described as follows: "...the one we're still talking about is Elkin Creek, a tiny winery nestled in the woods across from a well-preserved 19th-century mill. The young chef, Jesse Williams, cooks everything from local vegetables to pork shoulders in a wood-burning brick oven. We left happy and full, understanding what the French must mean when they talk about terroir — the way foods are stamped with a keen sense of place."



*Elkin Creek Vineyards*

Then, you'll head to **Historic Downtown Elkin** to spend the rest of the afternoon enjoying the craft shops of downtown Elkin and a visit to the **Yadkin Valley Craft Guild Shop**.

*Overnight in the Elkin area.*

## four day option: day three

### **MOUNT AIRY**

Begin the day with a step back in time to “**Mayberry**,” otherwise known as Mount Airy, and enjoy its lively main street shopping. Take in lunch at **The Wolf’s Lair Restaurant at Black Wolf Vineyards** near Dobson....and don’t forget to ask them about their name!

Head to **Shelton Vineyards**, the largest family owned estate winery in North Carolina. Shelton produces over 50,000 cases of award-winning wine per year, and the landscaping and grounds are stunning.

*Overnight in the Winston-Salem area.*

## four day option: day four

### **WINSTON-SALEM**

Your morning is free to explore the wonderful shops and art galleries in the Arts District and throughout downtown **Winston-Salem**. Lunch on your own – maybe you want to sample wines at 6th and Vine, enjoy the local brew at Foothills Brewery, or savor contemporary Southern cuisine at Sweet Potatoes Restaurant.

Continue on the road to Lexington and capture the tastes of **Childress Vineyards**, owned by NASCAR team owner Richard Childress. Visit Childress’ wine production facility where you can see, taste, and smell firsthand the winemaking process. From chardonnay to merlot, you get a chance to sample and buy wines by award-winning winemaker Mark Friszolowski, whose wines were twice named to the “50 Best Wines of the World.”

## contacts

### **PRIMARY CONTACT:**

Wilkesboro Tourism Development Authority  
203 West Main Street  
Wilkesboro, NC 28697  
336.838.3951 x 242  
[info@wilkescountytourism.com](mailto:info@wilkescountytourism.com)  
[www.wilkescountytourism.com](http://www.wilkescountytourism.com)

### **SECONDARY CONTACTS:**

Mount Airy Tourism Authority & Chamber of Commerce  
200 North Main Street  
Mount Airy, NC 27030-0913  
800.948.0949  
[tourism@visitmayberry.com](mailto:tourism@visitmayberry.com)  
[www.visitmayberry.com](http://www.visitmayberry.com)

Winston Salem Convention & Visitors Bureau  
200 Brookstown Ave.  
Winston-Salem, NC 27101  
866.728.4200  
[info@wscvb.com](mailto:info@wscvb.com)  
[www.visitwinstonsalem.com](http://www.visitwinstonsalem.com)

Yadkin Valley Tourism Authority & Chamber of Commerce  
116 East Market Street  
Elkin, NC 28621  
336.526.1111  
[lauretteleagon@yadkinvalley.org](mailto:lauretteleagon@yadkinvalley.org)  
[www.yadkinvalley.org](http://www.yadkinvalley.org)

# adventures in the wild

*Adventures in the Wild offers a celebration of the beauty and bounty of western North Carolina.*

## four day tour: day one

### BLUE RIDGE PARKWAY

Begin your day on the beautiful **Blue Ridge Parkway**, an All-American Scenic Road, with a stop in picturesque **Little Switzerland** at the historic **Switzerland Inn**, perched right on the side of the mountain. Enjoy breakfast at the Inn's Chalet Restaurant while overlooking a breathtaking view.

Drive along the Parkway to **Linville Caverns**, where guided tours will take you into a natural limestone cavern. It's a short hike to the magnificent **Linville Falls**.

No visit to the High Country is complete without a stop at **Grandfather Mountain**. This privately-owned mountain and nature preserve features the famous **Mile High Swinging Bridge**, a native animal habitat with bears, cougars, and otters, a nature museum, hiking trails, and a restaurant and gift shop.

*Dinner & Overnight in Blowing Rock area.*



*Blue Ridge Parkway*



*Grandfather Mountain*

## four day tour: day two

### NEW RIVER AND THE WILKESBOROS



*New River - photo by A.T. Barbee*

Plan for a Canoe Trip on the **New River** and see the High Country from the second oldest river in the world. Then follow the “Talking Tree Trail” at **Rendezvous Mountain**, where the trees literally tell the forest’s history. Now that you’ve worked up an appetite, take in an “all you can eat” lunch at Fire Mountain or a hearty home-style meal at Banjo’s Mountain Eatery.

After lunch, visit **W. Kerr Scott Dam and Reservoir**, a picturesque lake with the Blue Ridge Mountains as a stunning backdrop.

Rent a mountain bike and attack the **Dark Mountain Trails**, world-class mountain biking trails surrounding the lake. If you are feeling a little more low-key, stroll the lake paths and enjoy the scenery.



*Dark Mountain Trails*

Later, enjoy a dinner of world-famous North Carolina barbecue at **Brushy Mountain Smokehouse and Creamery**, featured on Food Network’s *BBQ with Bobby Flay* and in *Our State* magazine. Don’t miss the handcrafted ice cream for dessert!



*W. Kerr Scott Dam and Reservoir*

*Overnight in Wilkesboro.*

## four day tour: day three

### **WILKES COUNTY**

Start your morning at the Wilkes Community College's **Merle Watson Garden of the Senses**, a garden designed for the visually impaired, but an experience to be had by all.

Travel to **Stone Mountain State Park** and its breathtaking 600 foot granite dome (stop to pick up a picnic lunch on the way.) Hike the strenuous Stone Mountain Loop Trail to the summit of Stone Mountain, and take a break to enjoy your picnic lunch.



*Stone Mountain State Park*



*Willow Creek at Stone Mountain State Park*

Follow the trail to the stunning Stone Mountain Falls, and on to the base of the mountain. For a less challenging option, stroll around one of the easy scenic trails and paths, and picnic beside a beautiful rhododendron-lined creek.

Head to **Raffaldini Vineyards** for a tasting and a stroll through the rose gardens, admiring the art and sculpture. Sip a glass of wine on the patio as you take in the breathtaking views of the Blue Ridge Mountains.

Later, enjoy a group dinner in Wilkesboro.

*Overnight in Wilkesboro.*

## four day tour: day four

### **HIDDENITE, CHARLOTTE**

Start your morning panning for gems at **Emerald Hollow Mine**, the only emerald mine in the world that is open to the public for prospecting. The mine is in the heart of one of the only emerald bearing deposits on the North American continent.



*Emerald Hollow Mine*

Enriched by your mining experience, head out for a leisurely stroll or guided tour through the **Daniel Stowe Botanical Gardens**, named one of the nation's 20 Great Gardens in HGTV's popular book, *Flower Gardening*. The site is located on 450 acres along the banks of Lake Wylie.

Following lunch, get ready for a real adventure at Charlotte's newest attraction, the **US National Whitewater Center**. The river has the look and feel of a mountain river, but with a condensed series of adjustable rapids and whitewater. You can choose to "ride the rapids", climb the rock wall, hike or bike the beautiful scenic trails, or grab a great lunch and maybe catch a glimpse of the Olympic team brave the rapids.



*US National Whitewater Center*

# contacts

## **PRIMARY CONTACT:**

Wilkesboro Tourism Development Authority  
203 West Main Street  
Wilkesboro, NC 28697  
336.838.3951 x 242  
[info@wilkescountytourism.com](mailto:info@wilkescountytourism.com)  
[www.wilkescountytourism.com](http://www.wilkescountytourism.com)

## **SECONDARY CONTACTS:**

NC High Country Host  
1700 Blowing Rock Road  
Boone, NC 28607  
828.264.1299  
[www.highcountryhost.com](http://www.highcountryhost.com)  
[info@highcountryhost.com](mailto:info@highcountryhost.com)

Visit Charlotte  
500 S College St  
Suite 300  
Charlotte NC 28202  
704.331.2748  
[www.visitcharlotte.com](http://www.visitcharlotte.com)



# notes